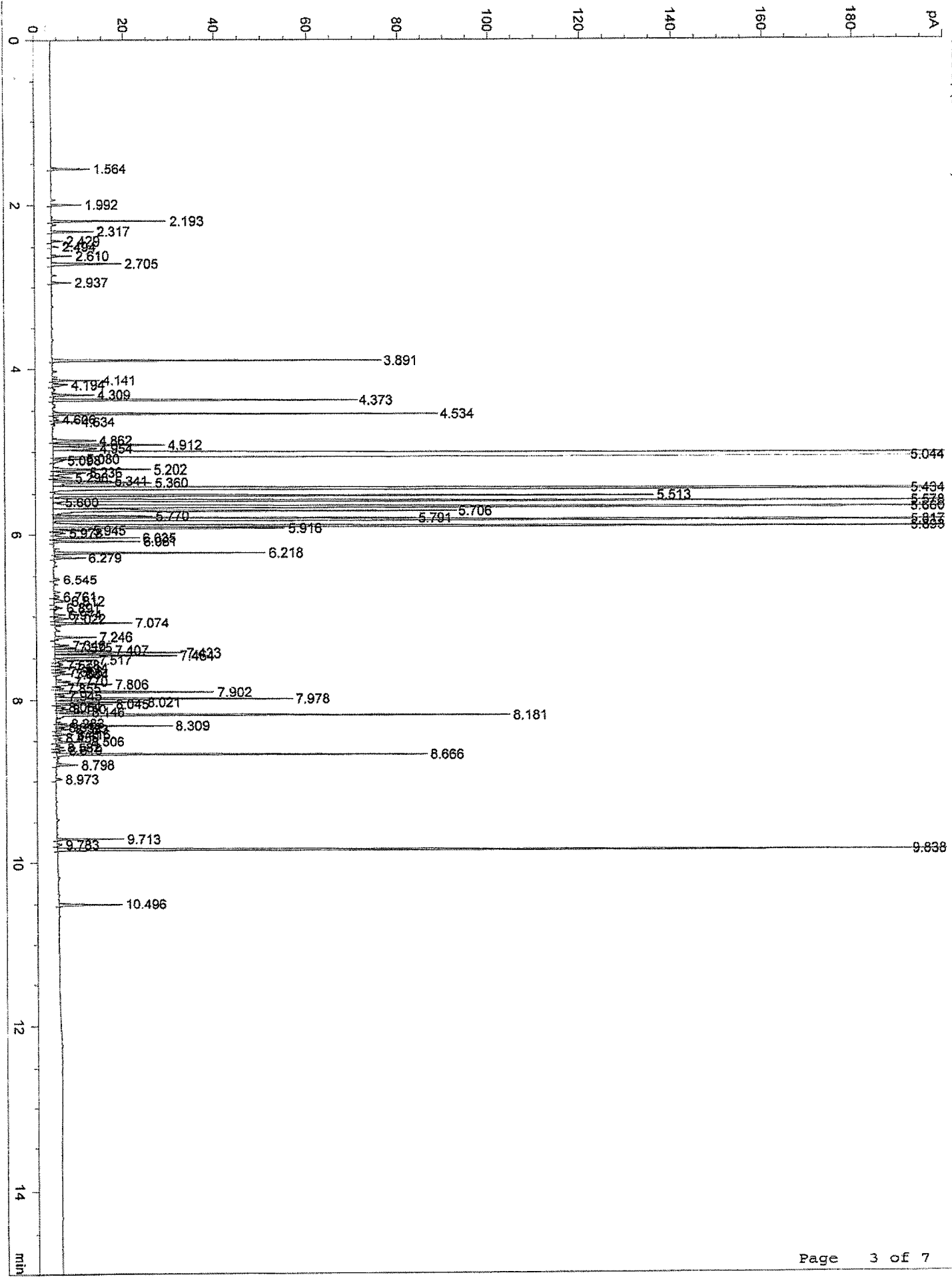


Data File C:\CHEM32\1\DATA\05242018\05242018 2018-05-24 07-49-41\015F2501.D
Sample Name: CANANGA

=====
Acq. Instrument : GC3
Injection Date : 5/24/2018 6:27:32 PM
Seq. Line : 25
Location : Vial 15
Inj : 1
Inj Volume : 0.1 µl
Sequence File : C:\Chem32\1\DATA\05242018\05242018 2018-05-24 07-49-41\05242018.S
Method : C:\CHEM32\1\DATA\05242018\05242018 2018-05-24 07-49-41\CAT18.M (Sequence Method)
Last changed : 1/10/2018 10:57:22 PM
Method Info : FAST GC GENERAL OIL METHOD 0.10 COLUMNS
Sample Info : OIL CANANGA JAVA EXTRA FCC C31279



Signal 2: FID2 B,

Peak #	RetTime [min]	Type	Width [min]	Area [pA*s]	Height [pA]	Area %
1	1.564	BB	0.0134	7.29088	8.62901	0.17217
2	1.992	BB	0.0119	5.10390	6.70487	0.12053
3	2.193	BB	0.0114	18.42765	25.71619	0.43517
4	2.317	BB	0.0118	7.05471	9.39102	0.16660
5	2.429	BB	0.0118	1.93724	2.56820	0.04575
6	2.494	BB	0.0126	1.31694	1.68547	0.03110
7	2.610	BB	0.0114	3.32667	4.60779	0.07856
8	2.705	BB	0.0139	14.59192	15.61196	0.34459
9	2.937	BB	0.0117	3.26567	4.39062	0.07712
10	3.891	BB	0.0117	53.65726	72.04369	1.26712
11	4.141	BB	0.0121	8.15227	10.44975	0.19252
12	4.194	BB	0.0161	3.76357	3.34071	0.08888
13	4.309	VB	0.0136	7.95454	9.19133	0.18785
14	4.373	BB	0.0134	56.61284	66.43175	1.33692
15	4.534	VB	0.0110	58.21825	84.39522	1.37483
16	4.606	BV	0.0193	1.61829	1.19370	0.03822
17	4.634	VB	0.0125	4.13959	5.36898	0.09776
18	4.862	BV	0.0220	12.72992	9.56582	0.30062
19	4.912	VV	0.0122	19.71957	24.99336	0.46568
20	4.954	VV	0.0347	20.30593	9.59669	0.47953
21	5.044	VV	0.0254	1361.15173	694.23517	32.14371
22	5.080	VV	0.0107	4.62139	6.58566	0.10913
23	5.098	VB	0.0169	2.86889	2.32946	0.06775
24	5.202	BV	0.0123	17.37230	21.74414	0.41025
25	5.236	VV	0.0177	8.83122	7.24696	0.20855
26	5.298	VV	0.0169	4.89362	4.09980	0.11556
27	5.341	VV	0.0125	10.54317	12.96982	0.24898
28	5.360	VB	0.0157	23.83592	21.95990	0.56289
29	5.434	BB	0.0165	345.20471	308.84048	8.15204
30	5.513	BV	0.0141	119.29418	131.81357	2.81714
31	5.578	VV	0.0154	221.20323	217.69652	5.22373
32	5.600	VV	0.0128	1.58695	1.88140	0.03748
33	5.660	VV	0.0158	341.92166	298.82272	8.07451
34	5.706	VV	0.0150	87.38478	88.37096	2.06360
35	5.770	VV	0.0116	16.27467	22.10282	0.38433
36	5.791	VV	0.0123	66.87850	79.51184	1.57934
37	5.817	VB	0.0131	282.55344	311.92554	6.67252
38	5.893	BV	0.0153	227.24599	224.84537	5.36643
39	5.916	VV	0.0146	46.30286	50.85839	1.09345
40	5.945	VV	0.0120	6.21211	8.01812	0.14670
41	5.978	VV	0.0134	2.43252	2.71625	0.05744
42	6.035	VV	0.0121	14.93918	19.22633	0.35279
43	6.081	VB	0.0109	13.89975	19.40136	0.32824
44	6.218	BB	0.0116	34.20557	46.48695	0.80777
45	6.279	BB	0.0121	5.33719	6.85602	0.12604
46	6.545	BB	0.0135	1.27876	1.41450	0.03020
47	6.761	BV	0.0131	1.06186	1.28687	0.02508
48	6.812	VB	0.0171	3.78341	3.12883	0.08935
49	6.891	VV	0.0123	1.56137	2.05956	0.03687
50	6.974	VV	0.0146	2.39981	2.40739	0.05667
51	7.022	VV	0.0172	3.57671	3.29037	0.08446
52	7.074	VV	0.0142	15.82250	17.29042	0.37365
53	7.246	BB	0.0127	8.00823	9.15372	0.18911

Sample Name: CANANGA

Peak #	RetTime [min]	Type	Width [min]	Area [pA*s]	Height [pA]	Area %
54	7.346	BV	0.0122	2.43471	3.09677	0.05750
55	7.375	VV	0.0141	4.13095	4.53215	0.09755
56	7.407	VV	0.0151	13.69744	12.68917	0.32347
57	7.433	VV	0.0136	24.68044	28.62676	0.58283
58	7.464	VB	0.0154	28.95165	27.17534	0.68370
59	7.517	BB	0.0152	8.56104	8.94600	0.20217
60	7.578	BV	0.0214	2.52852	1.74314	0.05971
61	7.614	VV	0.0144	3.31395	3.54264	0.07826
62	7.656	VV	0.0142	1.96051	2.23579	0.04630
63	7.684	VB	0.0128	2.94402	3.50318	0.06952
64	7.770	BV	0.0151	3.26133	3.29035	0.07702
65	7.806	VV	0.0186	16.75149	12.52175	0.39559
66	7.855	VV	0.0141	1.64297	1.80649	0.03880
67	7.902	VB	0.0151	34.97706	35.12947	0.82599
68	7.945	BV	0.0144	1.98320	2.03289	0.04683
69	7.978	VB	0.0123	41.29568	51.98875	0.97520
70	8.021	BV	0.0121	15.29469	19.70794	0.36119
71	8.045	VV	0.0119	9.61041	12.61153	0.22695
72	8.081	VV	0.0125	1.53996	1.89389	0.03637
73	8.110	VV	0.0158	3.14899	2.86102	0.07436
74	8.146	VV	0.0140	6.32136	7.01445	0.14928
75	8.181	VB	0.0123	79.23635	99.73363	1.87117
76	8.283	BV	0.0117	1.82398	2.45489	0.04307
77	8.309	VV	0.0106	17.99355	25.89228	0.42492
78	8.332	VV	0.0115	1.39056	1.90914	0.03284
79	8.353	VB	0.0124	2.73642	3.41413	0.06462
80	8.416	BV	0.0130	3.36986	3.92526	0.07958
81	8.459	VV	0.0155	1.47324	1.37024	0.03479
82	8.506	VV	0.0138	6.29524	7.12244	0.14866
83	8.582	VV	0.0119	1.38711	1.82729	0.03276
84	8.619	VV	0.0133	1.81814	2.06126	0.04294
85	8.666	VB	0.0119	61.85825	81.43305	1.46079
86	8.798	BB	0.0137	4.30597	4.69751	0.10169
87	8.973	BB	0.0133	1.11480	1.33115	0.02633
88	9.713	BB	0.0123	11.26479	14.91973	0.26602
89	9.783	BB	0.0151	1.09248	1.05540	0.02580
90	9.838	BB	0.0133	179.26993	213.76422	4.23347
91	10.496	BB	0.0168	15.44454	14.12793	0.36472

Totals : 4234.58137 3754.44235

=====
*** End of Report ***